

AIMEE SIDE TABLE

A dramatic pairing of earthy and glam, the Aimee's oversize cube shape highlights the captivating texture of its natural slubby silk finish; brass stripes give it a linear look. Topped with antique mirror, the Aimee is surprisingly versatile.

MATERIAL

Faux Silk

DIMENSIONS

22"L x 22"W x 22"H

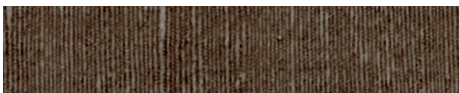
WEIGHT

41 lbs

This item is handcrafted and may show slight variation in size from one piece to another.



FINISHES



Dark Mushroom



Metallic Gold



Sand

