



## COCO

Leaf coral was the inspiration for this remarkable piece. Hours of molding and hand painting are necessary to fashion the Coco's undulating oval of white coral. For a less casual interpretation, a thin silver or gold tip is applied to the end of each "leaf."

### **MATERIAL**

Faux Coral

### **DIMENSIONS**

36"W x 47"H

Outer Profile: 6"

### **REFLECTION AREA**

27"W x 38"H

### **TYPE OF HARDWARE**

D Ring

*Our mirrors are designed to be hung by a professional, usually by wire. Actual hanging specifics vary on a case by case basis and depend on several variables, including the mirror weight and wall type. Incorrect hanging can result in damage to the mirror or the wall. Made Goods is not responsible for damage due to incorrect hanging of our pieces.*

### **HANGING ORIENTATION**

Portrait

### **WEIGHT**

104 lbs

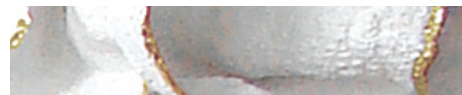
### **MIRROR TYPE**

Normal

### **FINISHES**



White



White with Gold



White with Silver

