



## CREIGHTON

Creighton's mysterious, abstract pattern is brought to life with paper-thin slices of ginger root, dipped in a streaking dark stain and captured in a disc of clear resin. Every piece is one-of-a-kind. Steel stand included.

**MATERIAL**

Ginger Root/Resin\*

**DIMENSIONS**

14"L x 4"W x 18.5"H

**SOLD AS**

Individually

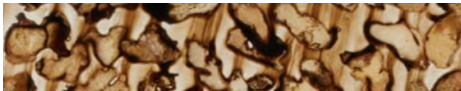
**WEIGHT**

2.5lbs

*\* Natural variation to be expected.*

*This item is handcrafted and may show slight variation in size from one piece to another.*

**FINISH**



Dark Stained/Clear

