

EMILY BOX SET

The material covering these boxes is woven by a tribe in the Philippines, and naturally dyed with vegetation, flowers, and seeds. The rattan texture adds character; interior is suede.

MATERIAL

T'nalak

DIMENSIONS

A. 9"L x 7"W x 4"H

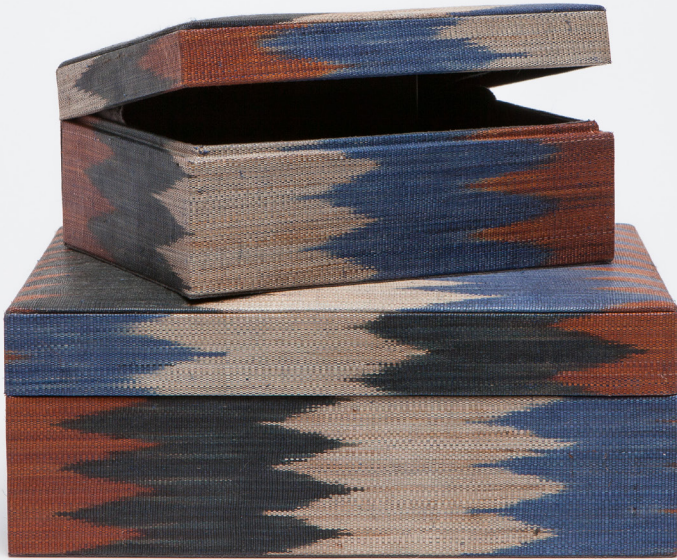
B. 13"L x 10"W x 5"H

SOLD AS

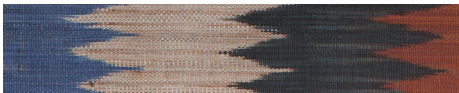
Set of 2

INTERIOR DETAIL

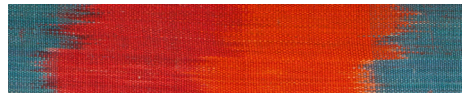
Black Faux Suede



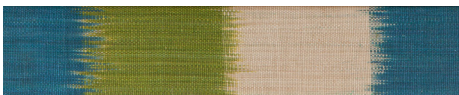
FINISHES



Earthy Zig Zag



Orange/Red/Blue



Turquoise/Green/Cream

