

EMMA

The Emma is simple perfection. Material covers both sides of a thin, dramatic three-inch ring, surrounding a beveled center mirror. Available in waxed linen and faux shagreen, it's a piece that is durable and refined.

MATERIAL

Realistic Faux Shagreen

DIMENSIONS

A. 32" Dia

B. 38" Dia

C. 44" Dia

Outer Profile: 3"

REFLECTION AREA

A. 30" Dia

B. 37" Dia

C. 42" Dia

TYPE OF HARDWARE

D Ring

WEIGHT

A. 29lbs

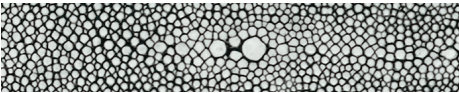
B. 38lbs

C. 51lbs

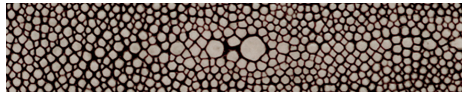
MIRROR TYPE

Beveled

FINISHES



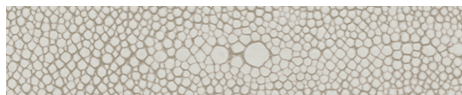
Cool Gray



Dark Mushroom



Ivory



Sand

