



FLORENCE

At Made Goods, we love working with fun materials! But sometimes a shape inspires us with its beauty and calls for some restraint. The Florence is quite a piece. Starting with a classic Palladn form, we delicately tapered the body and finished the Florence in three ways— hammered metal, tikra mirror, and bone.

MATERIALS

Metal

DIMENSIONS

26"W x 38"H

Outer Profile: 1"

REFLECTION AREA

22"W x 34"H

TYPE OF HARDWARE

D Ring

Our mirrors are designed to be hung by a professional, usually by wire. Actual hanging specifics vary on a case by case basis and depend on several variables, including the mirror weight and wall type. Incorrect hanging can result in damage to the mirror or the wall. Made Goods is not responsible for damage due to incorrect hanging of our pieces.

HANGING ORIENTATION

Portrait

WEIGHT

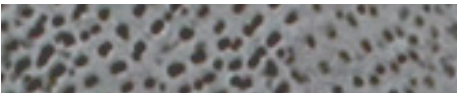
37 lbs

MIRROR TYPE

Normal

**Natural variations in this material may occur.*

FINISHES & MATERIALS



Hammered Metal



Natural Bone*



Tikra Mirror

