



GAGE

Modernized curves with the distinguished look of antiqued brass.

MATERIAL

Metal

DIMENSIONS

A. 22"W x 42"H

B. 28"W x 72"H

Outer Profile: 2"

REFLECTION AREA

A.

B.

TYPE OF HARDWARE

D Ring

Our mirrors are designed to be hung by a professional, usually by wire. Actual hanging specifics vary on a case by case basis and depend on several variables, including the mirror weight and wall type. Incorrect hanging can result in damage to the mirror or the wall. Made Goods is not responsible for damage due to incorrect hanging of our pieces.

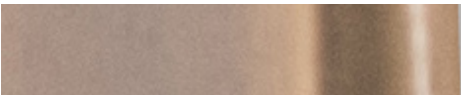
WEIGHT

35 lbs

MIRROR TYPE

Beveled

FINISH



Antiqued Brass

