

**BUILD IT  
YOUR WAY**  
EXPLORE OUR  
FABRIC OPTIONS



## KEELY

A 60's-esque panel style dining chair is updated in it's proportioned and given life with an organic faux bois etched pattern. Crafted from aluminum so the chair is perfectly weighted, these comfortable chairs will add edge and drama in a variety of settings. Upholster in any fabric from our selection, or your own COM/COL.

### MATERIAL

Faux Bois Metal

### DIMENSIONS

Overall: 20"W x 23"D x 35"H

Seat Depth: 17"

Seat Height 16"

Seat Height (without upholstery): 16"

*Cushion height may vary from 1/2 to 1 inch*

### UPHOLSTERY INFORMATION

Types of Fabric: Can be upholstered with our fabric/leather options or COM/COL

### COM YARDAGE REQUIREMENT

Solid: Requires 1 Yard of fabric

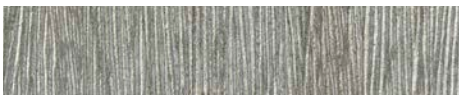
Pattern: Yardage amount may vary depending on pattern orientation and pattern repeat. Please call for quote.

*This item is handcrafted and may show slight variation in size from one piece to another.*

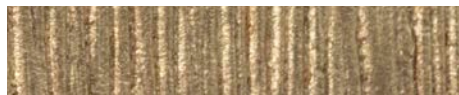
*In-stock upholstered pieces have a 6 week lead time.*



### FINISH



Antiqued Silver



Gold

