



NEO

Stand back from the striped Neo to appreciate the range of light and shadow-play created by multi-paneled construction and printed hair-on-hide leather. Soft, sophisticated, and enviable all in one piece.

MATERIAL

Hair-On-Hide

DIMENSIONS

A. 26"W x 38"H

Outer Profile: 1.5"

B. 30"W x 52"H

Outer Profile: 1.5"

REFLECTION AREA

A. 19.75"W x 31.75"H

B. 23.75"W x 45.75"H

TYPE OF HARDWARE

D Ring

Our mirrors are designed to be hung by a professional, usually by wire. Actual hanging specifics vary on a case by case basis and depend on several variables, including the mirror weight and wall type. Incorrect hanging can result in damage to the mirror or the wall. Made Goods is not responsible for damage due to incorrect hanging of our pieces.

HANGING ORIENTATION

Portrait

WEIGHT

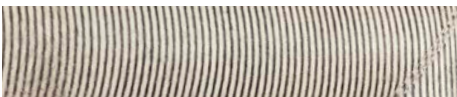
A. 30 lbs

B. 47 lbs

MIRROR TYPE

Beveled

FINISH



Brown Candy Striped

