

SENET STOOL

The Senet is a zinc dodecahedron composed of 12 pentagonal faces. Sculptural as well as functional, its geometric shape adds an industrial detail to any space.

MATERIAL

Metal

DIMENSIONS

23"W x 23"D x 19"H

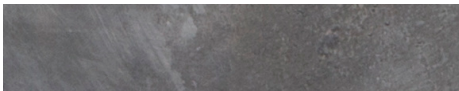
WEIGHT

28 lbs

This item is handcrafted and may show slight variation in size from one piece to another.



FINISH



Zinc

