

**BUILD IT
YOUR WAY**
EXPLORE OUR
FABRIC OPTIONS



TYBALT

A wingback with clipped wings! Emphasis on angles in the chair back and armrests give the Tybalt a vintage modern take on seating. The maximalist shape is intensified through the use of hammered iron, which appears to be in motion. Available in black or gold. Upholster with any fabric from our selection, or your own COM/COL.

MATERIAL

Iron

DIMENSIONS

30"W x 31"D x 43"H

Seat Depth: 24"

Seat Height: 17"

UPHOLSTERY INFORMATION

Types of Fabric: Can be upholstered with our fabric/ leather options or COM/COL.

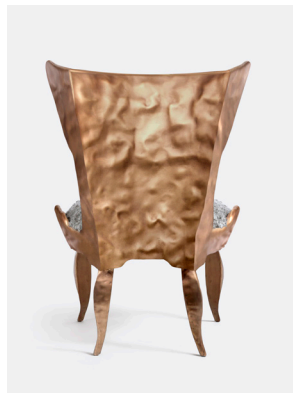
COM YARDAGE REQUIREMENT

Solid: Requires 1 Yard

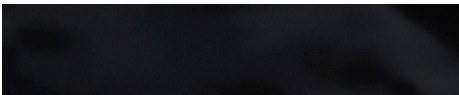
Pattern: Yardage amount may vary depending on pattern orientation and pattern repeat. Please call for quote.

This item is handcrafted and may show slight variation in size from one piece to another.

In-stock upholstered pieces have a 6 week lead time.



FINISHES



Hammered Black



Hammered Gold

FABRIC WIDTH	FABRIC REPEAT						
	Plain < 1"	1" - 6"	7" - 14"	15" - 20"	21" - 27"	28" - 36"	Full Width Centered
54"	0%	15%	30%	35%	40%	45%	100%

