

## VINCENT BUFFET

Our full zinc Vincent showcases one of our most popular materials in a statement-making buffet, perfect as an anchoring décor element in dining and living rooms. Detailing on the front cabinet drawers includes raised borders and softly curved clipped corners. Exposed nail heads add a stylized industrial element.

### MATERIAL

Metal

### DIMENSIONS

- A. 48" L x 20" W x 32" H
- B. 60" L x 20" W x 33" H

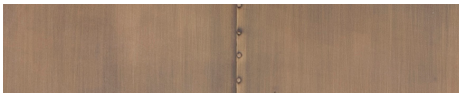
### INTERIOR

- A. 2 adjustable shelves  
2 compartments
- B. 3 fixed shelves  
3 compartments

*This item is handcrafted and may show slight variation in size from one piece to another.*



### FINISHES



Aged Bronze



Zinc

