



ALUMET FLOOR LAMP

Hair-on-hide is pieced together in rectangular panels to create the graphic look of our tapered, towered Alumet, highlighting the varying shades of gray in this luxe material. Natural variations in this material may occur. Slight differences in color and texture are characteristics of this collection's aged full-grain leather. This durable, high quality leather may show inherent markings, distressed appearance, and variations in pattern.

MATERIAL

Hair-On Hide*

DIMENSIONS

Overall: 21"Dia x 73"H

Lamp Base: 8"L x 8"W

Lamp Shade: 21"Dia x 9"H

SHADE

Tapered Drum, Linen

SHADE DIFFUSER

Yes

BULB TYPE

Type A - 150 Max. Wattage

UL/CUL CERTIFIED

Yes /Yes

SWITCH TYPE

3-way

CORD LENGTH FROM BASE

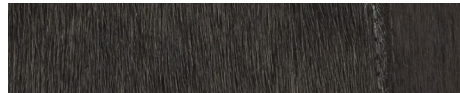
88"

**Natural variation to be expected.*

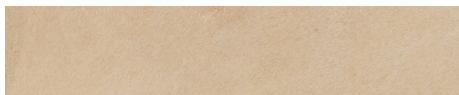
FINISH



Gray



Dark Gray



Beige

