



AMY

Stripes of color and natural rattan alternate in this densely woven armchair with its high, curved back and deep apron, neatly finished with natural-rattan binding.

MATERIAL

Rattan

DIMENSIONS

28"W x 29"D x 30"H

Arm Height: 28.5"

Seat Depth: 21.5"

Seat Height: 16.5"

Seat Height (without upholstery): 19.5"

Cushion height may vary from 1/2 to 1 inch

WEIGHT

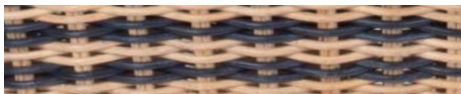
18 lbs

This item is handcrafted and may show slight variation in size from one piece to another.

In-stock upholstered pieces have a 6 week lead time.



FINISHES



Navy/Natural



Red/Natural

