

## ASTRA LAPTOP TABLE

This accent table of High Gloss faux malachite and Gold texturized steel has straight edges, geometric shapes, and an opulent aesthetic.

**MATERIAL**

Faux Malachite/Texturized Steel

**DIMENSIONS**

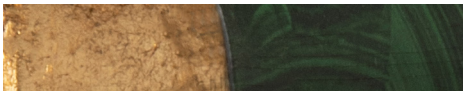
16"L x 40"W x 30"H

**WEIGHT**

22lbs



**FINISHES**



High Gloss/Gold

