

BEXLEY INDOOR LAPTOP TABLE

Crafted from cast resin, this pedestal-style laptop table is the perfect piece to enliven indoor spaces.

NOT SUITABLE FOR FREEZING TEMPERATURES. SHOULD BE KEPT AWAY FROM ANY NEARBY HEAT SOURCE AS HEAT MAY CAUSE RESIN TO BEND.

MATERIAL

Cast Resin

DIMENSIONS

16"L x 16"W x 24"H

WEIGHT

30 lbs

This item is handcrafted and may show slight variation in size from one piece to another.



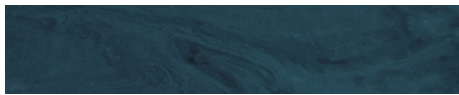
FINISHES



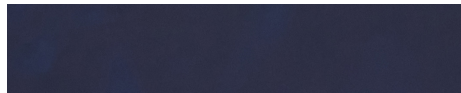
Marigold



Pearl White



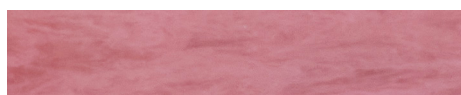
Dark Teal



Cobalt



Juniper



Cherry Blossom

