



COCO

Leaf coral was the inspiration for this remarkable piece. Hours of molding and hand painting are necessary to fashion the Coco's undulating oval of white coral. For a less casual interpretation, a thin silver or gold tip is applied to the end of each "leaf."

MATERIAL

Faux Coral

DIMENSIONS

36"W x 47"H

Depth: 6"

REFLECTION AREA

27"W x 38"H

TYPE OF HARDWARE

D Ring

Our mirrors are designed to be hung by a professional, usually by wire. Actual hanging specifics vary on a case by case basis and depend on several variables, including the mirror weight and wall type. Incorrect hanging can result in damage to the mirror or the wall. Made Goods is not responsible for damage due to incorrect hanging of our pieces.

HANGING ORIENTATION

Portrait/Landscape

WEIGHT

104 lbs

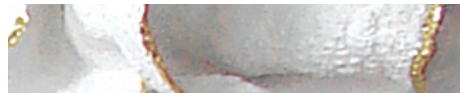
MIRROR TYPE

Normal

FINISHES



White



White with Gold



White with Silver

