

## **DAINA XL RECT TRAY SET**

Faux shagreen tray set with linear inset brass design and handles.

**MATERIAL**

Realistic Faux Shagreen

**DIMENSIONS**

A. 24"L x 18"W x 2"H

B. 30"L x 24"W x 2"H

**SOLD AS**

Set of 2

**WEIGHT**

15 lbs



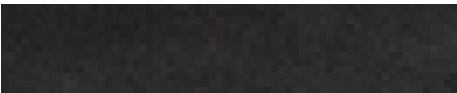
**FINISHES**



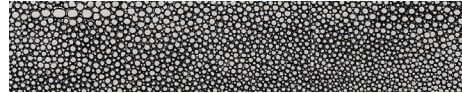
Sand



Sage



Black



Cool Gray

