



DALE

Designed with a pattern of protruding half-moons along a column, our Dale ceramic table lamp with a clear crystal base has a sculptural look that instantly modernizes any space. Available in matte white with brass finish and light gray with silver finish.

MATERIAL

Ceramic / Metal

DIMENSIONS

Overall: 15"Dia x 29"H

Lamp Base: 6"Dia

Lamp Shade: 15"D x 11"H

SHADE

Round, Linen

BULB TYPE

Type A , 40 Max. Wattage

UL/CUL CERTIFIED

Yes /Yes

SWITCH TYPE

1-Way

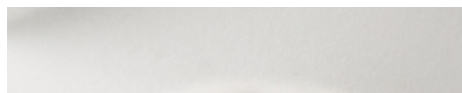
CORD LENGTH FROM BASE

62"

FINISH



Light Gray



Matte White

