

**OUTDOOR
APPROVED**



DESMOND

Available in two finishes, the Desmond looks best when mixed, matched, and displayed in groups. Perfect for display indoors and out.

MATERIAL

Reconstituted Stone*

DIMENSIONS

A. 5"Dia x 9.5"H

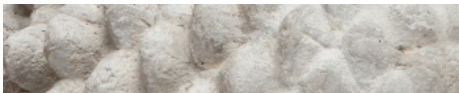
B. 7.5"Dia x 12.5"H

SOLD AS

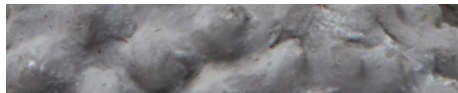
Set of 2

**Reconstituted Stone material naturally distresses. Minor cracks and imperfections are to be expected.*

FINISHES



Light Gray



Rough Gray

