



FABRE TABLE LAMP

The woven burlap finish of the Fabre's rectangular stand is elevated by a resin encasement. An acrylic base adds to its organically modern charm.

MATERIAL

Burlap/Clear Resin

DIMENSIONS

Overall: 16"L x 9"W x 26"H

Lamp Base: 7"L x 5"W

Lamp Shade: 16"L x 9"W x 9"H

SHADE

Rectangle, Linen

SHADE DIFFUSER

Yes

BULB TYPE

Type A - 100 Max. Wattage

UL/CUL CERTIFIED

Yes /Yes

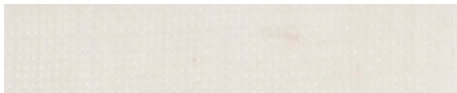
SWITCH TYPE

3-Way

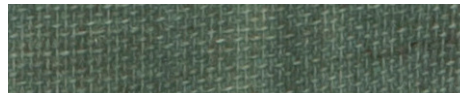
CORD LENGTH FROM BASE

62"

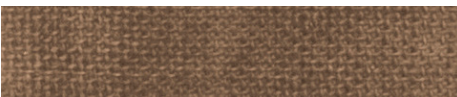
FINISHES



Off-White



Thyme



Walnut

