

## FREMONT

Minimal and modern, our Fremont features unique steel hardware and is perfect for the client who wants simplicity with a twist. The corners of this rectangular mirror are rounded, softening its aesthetic, while two tabs that adorn each side, are bold details that give it true style.

### MATERIAL

Metal

### DIMENSIONS

26"W x 38"H

Depth: 2"

### REFLECTION AREA

24"W x 36"H

### TYPE OF HARDWARE

Metal Cleats

*Our mirrors are designed to be hung by a professional, usually by wire. Actual hanging specifics vary on a case by case basis and depend on several variables, including the mirror weight and wall type. Incorrect hanging can result in damage to the mirror or the wall. Made Goods is not responsible for damage due to incorrect hanging of our pieces.*

### HANGING ORIENTATION

Portrait

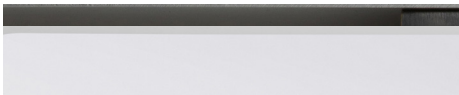
### WEIGHT

45 lbs

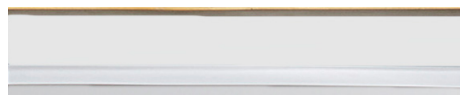
### MIRROR TYPE

Normal

### FINISHES



Pewter Steel



Matte Brass Steel

