

## HUXLEY XL RECT TRAY SET

Narrow strands of basket-woven faux rattan give our boxy Huxley tray set subtle yet light-catching texture.

**MATERIAL**

Woven Faux Rattan

**DIMENSIONS**

A. 24"L x 18"W x 2"H

B. 30"L x 24"W x 2"H

**SOLD AS**

Set of 2

**WEIGHT**

A. 8lbs

B. 13lbs

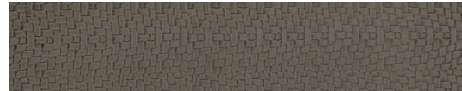
*This item is handcrafted and may show slight variation in size from one piece to another.*



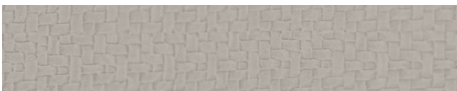
**FINISHES**



Dove White



Smoke



French Gray

