

ISLA CABINET

FURISLACAB3216NV
MG079266

ISLA, Cabinet, Navy Stain, 32"Lx16"Wx72"H,
Peeled Rattan.

The Isla cabinet features a natural peeled rattan frame that is tightly wrapped, enhancing the dense basket weave of its natural rattan sides. The doors have a slightly looser basket weave, contributing to the overall design. Inside, there are three fixed wooden shelves that are perfect for storing essentials. Natural variations are to be expected.

MATERIAL

Peeled Rattan

DIMENSIONS

32"L x 16"W x 72"H

ADDITIONAL DIMENSIONS

36"L x 16"W x 68"H

CLEARANCE

5.75"

NUMBER OF KNOBS

2

NUMBER OF SHELVES

3

ADJUSTABLE SHELVES

No

SHELF CLEARANCE

14.5"

FLOATING

Yes

CLOSING MECHANISM

Standard

OUTDOOR SUITABLE

Not Outdoor Suitable

VARIATION TO BE EXPECTED

Yes

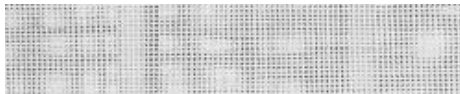
WEIGHT

110.00 lbs

FINISHES



Navy Stain



White



French Gray



Onyx



Natural

