

ISLA STANDING CABINET



A tightly wrapped, natural peeled rattan frame complements the dense basket weave of the natural peeled rattan sides and the slightly looser basket weave of the doors. Four fixed wood shelves, with tightly wrapped natural peeled rattan edges that mirror the cabinet's exterior structure, complete its well-tailored design and includes lower-patterned gold knobs.

MATERIAL
Peeled Rattan

DIMENSIONS
36"L x 16"W x 68"H

LEG CLEARANCE
20"

CLOSING MECHANISM
Soft-Close

INTERIOR
2 Shelves
3 Compartments

FREE FLOATING
Yes

WEIGHT
82 lbs

This item is handcrafted and may show slight variation in size from one piece to another.

FINISHES



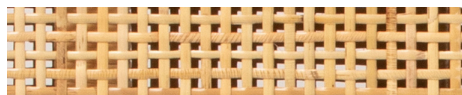
French Gray



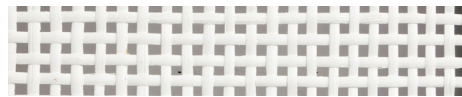
Smoke



Onyx



Natural



White

