



## JAMES

Starting with a clipped-corner rectangle shape of our Vincent mirror, we made the James using our detailed faux shagreen. Each piece has small, half-inch wood inner and outer bands, which frame beautiful faux shagreen panels.

### MATERIAL

Realistic Faux Shagreen

### DIMENSIONS

32"W x 44"H

Depth: 2"

### REFLECTION AREA

24"W x 36"H

### TYPE OF HARDWARE

D Ring

*Our mirrors are designed to be hung by a professional, usually by wire. Actual hanging specifics vary on a case by case basis and depend on several variables, including the mirror weight and wall type. Incorrect hanging can result in damage to the mirror or the wall. Made Goods is not responsible for damage due to incorrect hanging of our pieces.*

### HANGING ORIENTATION

Portrait/Landscape

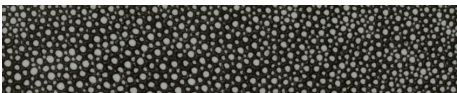
### WEIGHT

33 lbs

### MIRROR TYPE

Beveled

### FINISHES



Cool Gray



Dark Mushroom



Ivory

