

FAYE

The Faye is covered in natural fibers, buntal fabric handwoven on a curve, to create a gorgeous detail that's elevated by the tray's circular shape.

MATERIAL

Buntal

DIMENSIONS

A. 16" Dia x 2"H

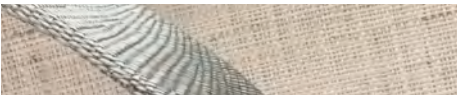
B. 20" Dia x 2"H

SOLD AS

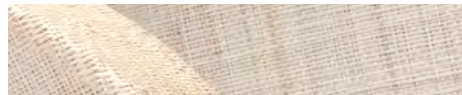
Set of 2



FINISHES



Gray



Natural

