

## LYLE

---

Hand woven t'nalak fabric tray with contrasting camel leather trim.

**MATERIAL**

T'nalak

**DIMENSIONS**

A. 16"L x 12"W x 2"H

B. 20"L x 14"W x 2"H

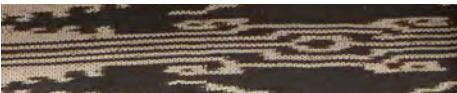
**SOLD AS**

Set of 2



---

**FINISH**



Black/Natural Tribal

