

# NATHANIEL DRESSER

Inspired by the celebrated luxury luggage makers, Nathaniel is an example of master craftsmanship. Jewel toned cotton jute surfaces are accented with hand-stitched full-grain leather detailing, including classic trunk-style corners.

## MATERIAL

Cotton Jute/Full-Grain Leather

## DIMENSIONS

A. 48"L x 20"W x 34"H

B. 60"L x 20"W x 34"H

## LEG CLEARANCE

5"

## NUMBER OF DRAWERS

A. 4

B. 6

## CLOSING MECHANISM

Soft-Close

## FREE FLOATING

No

## DOOR THICKNESS

0.75"

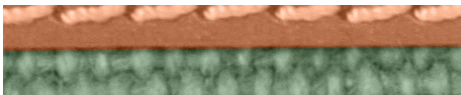
## WEIGHT

A. 210.9 lbs

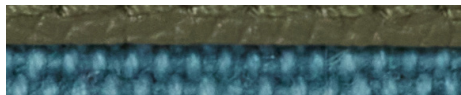
B. 222.6 lbs



## FINISHES



Light Green/Aged Camel



Teal/Forest

