

NATHANIEL NIGHTSTAND

Inspired by the celebrated luxury luggage makers, Nathaniel is an example of master craftsmanship. Jewel toned cotton jute surfaces are accented with hand-stitched full-grain leather detailing, including classic trunk-style corners.

MATERIAL

Cotton Jute/Full-Grain Leather

DIMENSIONS

A. 18" L x 18" W x 28" H
B. 30" L x 18" W x 28" H

LEG CLEARANCE

6"

NUMBER OF DRAWERS

1"

CLOSING MECHANISM

Soft-Close

INTERIOR

1 Shelves
Shelf Clearance: 12"
Dimension: A. 16.5" L x 17.5" W
B. 26.5" L x 17.5" W

FREE FLOATING

Yes

DOOR THICKNESS

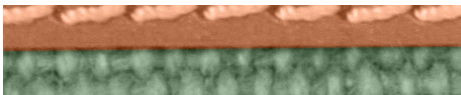
0.75"

WEIGHT

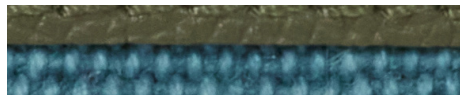
A. 42 lbs
B. 80.5 lbs



FINISHES



Light Green/Aged Camel



Teal/Forest

