



NORVEL

The deep, multi faceted patina of our handmade Zinc mirror will continue to richen over time as it evolves. Retaining the strength and drama of industrial design, this masculine mirror is well-suited for inventive spaces.

MATERIAL

Metal

DIMENSIONS

A. 26"W x 38"H

Depth: 1"

B. 36"W x 47"H

Depth: 1"

REFLECTION AREA

A. 15"W x 25.25"H

B. 25"x36"

TYPE OF HARDWARE

D Ring

Our mirrors are designed to be hung by a professional, usually by wire. Actual hanging specifics vary on a case by case basis and depend on several variables, including the mirror weight and wall type. Incorrect hanging can result in damage to the mirror or the wall. Made Goods is not responsible for damage due to incorrect hanging of our pieces.

HANGING ORIENTATION

Portrait

WEIGHT

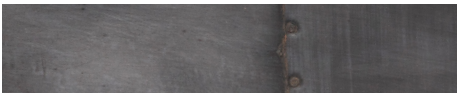
A. 23 lbs

B. 37 lbs

MIRROR TYPE

Normal

FINISH



Zinc

