

OLIVIA DRESSER

An Art Deco-inspired silhouette gives the Olivia a refined look—classic Upper East Side style crafted with raffia. Rounded corners, tapered legs, and inspired hardware complete the collection. Also available as a nightstand.

MATERIAL
Faux Raffia

DIMENSIONS
A. 48"L x 20"W x 34"H
B. 60"L x 20"W x 34"H

LEG CLEARANCE
5

NUMBER OF DRAWERS
A. 3
B. 6

INTERIOR DRAWER DIMENSIONSA. 3
A. TBD
B. 25"Lx18"Dx4.75"H / 6"H

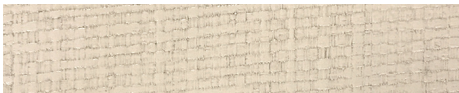
CLOSING MECHANISM
Soft-Close

WEIGHT
A. TBD
B. 218.5 lbs

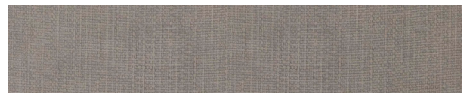
This item is handcrafted and may show slight variation in size from one piece to another.



FINISHES



Off-White



Seal

