

OLIVER SIDE TABLE

The tight diamond weave of this square-shaped side table helps it look delicate, can be used freely, and won't break on the edges. The white Pristine and denim-like Distressed Navy finishes will stay looking new.

MATERIAL

Diamond Faux Leather Weave

DIMENSIONS

24"L x 24"W x 28"H

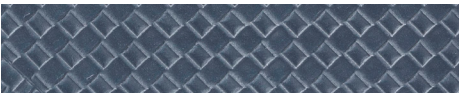
WEIGHT

51 lbs

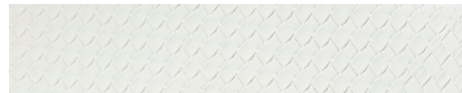
This item is handcrafted and may show slight variation in size from one piece to another.



FINISHES



Distressed Navy



Pristine

