

ROSLYN

Over-embroidered metal stitch on soft canvas creates a primitive, abstract geometric pattern.

MATERIAL

Canvas/Embroidery

DIMENSIONS

14"L x 20"W, 24"L x 24"

FABRIC CONTENT

100% Cotton Fabric

SOLD AS

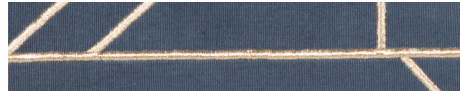
Multiples of 2



FINISHES



Gray



Navy



Beige

