

DENHAM COFFEE TABLE

Our Denham coffee table's pebble-shaped top is made from an impressive amalgamation of petrified wood tiles, laminated for longevity and accented by a refined beveled edge. Three tapered polished brass legs give this handsome table a touch of mid-century glamour.

MATERIAL

Steel

DIMENSIONS

A. 27" L x 18" W x 14"H*

B. 35" L x 24" W x 17"H*

WEIGHT

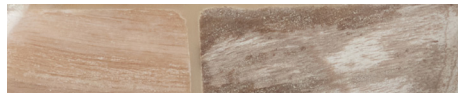
lbs



FINISHES



Dark Mix



Light Mix

